



# THE BEST WINDOWS

## MB-70 HI

is used both in individual constructions as well as in aluminum facades. The construction of the door and window systems with a thermal barrier MB-70HI is based on well-proven, well developed and highly appreciated base systems MB 70. The thermal insulation performance of frames of this system is considerably higher due to placing special insulating inserts.



## MB-78EI

**fire-proof system** - is a technically advanced system, which shows exceptional tightness and fire-resistance. The system meets the constantly toughening requirements of Polish and European standards concerning the constructions surrounding the zone of a safe evacuation for people and property in a burning building.

Partner



# ALUMINIUM WINDOWS

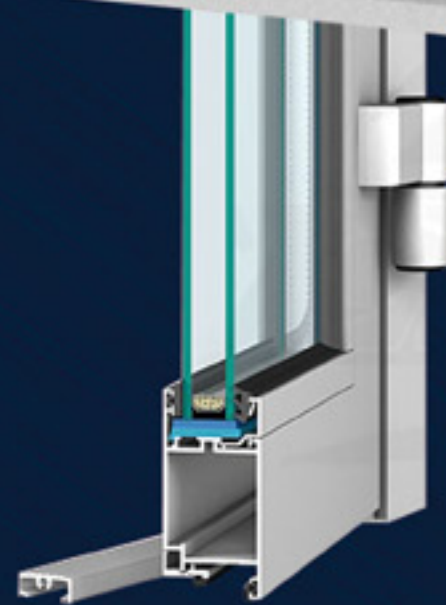
Modern aluminum windows and doors are designed to respond to the challenges of architectural trends, mainly thanks to the diversity of forms and shapes. Aluminum is an ideal material able to fulfill the growing expectations of the market and even the most sophisticated ideas of the customers.

**MB-45 MB-60 MB-70 MB-70 MB-HI and MB-SR 50** are high-quality aluminum systems, designed for the production of the elements of architectural internal and external constructions, i.e.: various types of windows, doors, partition walls, shop windows, windbreaks and spatial panel walls. Wide range of application possibilities as well as the designs and colors makes aluminum profiles perfect for the architecture of each building.

Type and character of the profiles allows to get slender and resistant constructions of windows and doors which fulfill individual customer preferences. Aluminum window and door systems guarantee exceptional durability, lightness and maximum area of glazing.



**MB-45 cold aluminum** – is used to produce elements of internal and external buildings, which do not require thermal insulation. The attractiveness of the system further enhances the possibility to choose between several options of different solutions.



**MB-60 warm aluminium** – is used to produce the external elements of the buildings, which require high thermal and acoustic insulation. The system has a low coefficient of thermal transmission U thanks to the use of thermal separators and seals.



THE BEST WINDOWS

[www.drutex.eu](http://www.drutex.eu)